

Contour Notes

A PUBLICATION OF THE ASSOCIATION OF WISCONSIN ARTISTS

Fall 2022



Board of Directors

President

Jeanne Ferreira, Verona
(608) 334-5063 president@wiscartists.org

Vice President

Sally Probasco, Madison
(608) 231-3037 or vicepresident@wiscartists.org

Secretary

Elizabeth Sawyer Kelly, Madison
(608) 338-5299 or secretary@wiscartists.org

Treasurer

Beverly Larson, Madison
(608) 347-2481 or treasurer@wiscartists.org

Outreach

Mary Ann Inman, Clinton
608-295-9979 outreach@wiscartists.org

Grant Writer

Christina Chalk, Colfax
(715) 514-8905 chalkcd@gmail.com

Membership

Terrence Doeler, Monona
membership@wiscartists.org

Awards Chair

Jill Jensen, Cambridge
(847) 275-6540 or awards@wiscartists.org

Youth Programs

Jeanne Ferreira, Coordinator, Verona
(608) 334-5063 or president@wiscartists.org

STAMP North/Wausau

Bobby Walker, Weston
(715) 298-3194 or stampnorth@wiscartists.org

Bridging Generations

Elizabeth Johanna, Blanchardville
(608) 354-3980 or
bridginggenerations@wiscartists.org

WRAP Liaison

Becky Herb, Madison
(608) 467-8594 or wrap@wiscartists.org

Editor

Tamara Tsurkan, Madison
(608) 274-2067 or editor@wiscartists.org

Publicity

Teresa Vicars, Lake Mills
(608) 225-1254 or publicity@wiscartists.org

About Us

The **ASSOCIATION OF WISCONSIN ARTISTS (AWA)**, is a non-profit membership organization. The 501 (c) (3) began in 1954 with 36 charter members. It flourished. The Association of Wisconsin Artists mission is to promote visual art exhibits, educational workshops, celebrations and recognition of our members and their communities.

Publications to educate and communicate:

- Contour Notes and E-News
- State Exhibit Catalog
- **www.wiscartists.org** – Learn about us. Register and pay for events, membership and store items.
- Timely Treasures, program calendar with event dates noted

Programs, events and recognition:

- Wisconsin Regional Art Program (WRAP)
- Member Exhibit
- Annual State Exhibit and Conference
- Evening with the Arts
- Tiny Treasures Exhibit and Sale
- Statewide Teen Art Mentor Program (STAMP)
- Bridging Generations (for ages 5 through 12 years old)
- Awards recognizing artistic excellence and service. Cash awards come from generous individuals, artists' families and arts organizations.

Funding sources:

- Tiny Treasures is an annual fundraiser - to help with AWA operations
- Membership dues and Wisconsin Arts Board grants help support AWA's mission
- Three interest-bearing endowments ensure that the mission of AWA continues well into the future.
- Individual and business contributions - art related advertising sales.

Have something to share?

Send articles, member news, tips, advice questions, etc., to **Mary Ann Inman** outreach@wiscartists.org

COVER: Cover photos by rows from top and left:

1. *Skeletal Season* by Elizabeth Sawyer Kelly (Tiny Treasure). *Waunakee WRAP* participants carved sculpture forms to be poured into aluminum casts, photo by Natasha Lutes.
2. *Looking for Trouble* by Terry Doeler (WRAP). *Work Hard, Play Harder* by Isaiah Snyder (STAMP).
3. *Michael Julian* demonstrated for the Waukesha/Oconomowoc WRAP. *The Meeting Tree* by Jennifer Cuccia (WRAP). *Floral Platelet #2* by Theresa Ray (WRAP). Antigo WRAP collage workshop.

Contour Notes is a quarterly newsletter published by the Association of Wisconsin Artists, and is sent to all members. The editor reserves the right to select the articles and advertisements for publication. Word counts apply.

A Letter from AWA President...



Jeanne Ferreira, AWA President

This summer, the AWA State Exhibit was proudly on display at the Center for the Visual Arts (CVA) in Wausau. When I visited the exhibit, I reflected on how we got here. WRAP celebrates 80+ years with many twists and turns in history during those years. There have been wars, recessions, and pandemics in those years and still the creativity of each artist remains. So why is that?

When we begin to create what happens to us? If you follow the psychology of creativity, it tells us that creating art can relieve stress, and we have much of that these days. It helps us communicate without words or confrontation. It helps the viewer learn and better understand the world. That understanding may be about color, or technique, or, it may be deeper emotions. Emotions are a big part of many artist renderings. When I view a piece of art, I do not first look for the technique but rather the emotion it brings out in me. Texture, composition, and color all provide a glimpse into the artist's emotions. In my opinion, when I watch my artist friends and family create, I witness that the best thing that happens to an artist while creating is joy. Yes, there is a mix of emotions when we create, frustration, maybe a little anger, and awe. But at the end of the day the joy that art brings us is why we continue to create during hard and happy times alike.

The State Exhibit exemplifies all the reasons we create. From the face of a sweet dog to the soulful expression on a veteran's face, each image or sculpture brings out a connection to the world. Kudos to all the State exhibitors and the artists that participated in WRAP, Statewide Teen Art Mentor Program (STAMP), Bridging Generations, and Tiny Treasures. Jobs well done.

Speaking of jobs well done, the Board of Directors and I want to thank each program Coordinator. We could not be the supportive organization we are without the help of all our volunteers. We also want to give a shout-out to CVA and Wisconsin Valley Art Association for helping organize and curate the State Exhibition. And I want to give a personal thanks to the Board who spent their time and effort to help us. We are a mighty force that keeps the wheels on the bus. Thank you for helping to educate, enable, and inspire the Wisconsin art community.

"All art should inspire and evoke emotion. Art should be something you can actually feel."

C. DeRubeis

Yours in Art,

Jeanne Ferreira

Contour Notes is supported in part by grants from the Fond du Lac Area Foundation, Harold C. Berkholtz Fund and the Wisconsin Arts Board with funds from the State of Wisconsin and the National Endowment for the Arts.

Getting to Know Your Wisconsin Artists

by Jeanne Ferreira

Having moved here a decade ago, I was unaware of James Watrous and wanted to know more about this Wisconsin artist. While not born in Wisconsin, Watrous was associated with UW-Madison for 70+ years. In 1933 he received funding (\$25/week) from the Public Works of Art Project (PWAP) to create panels of the folklore hero Paul Bunyan. After one year the PWAP disbanded and Watrous' work was not complete. He spent his spare time finishing the panels which were designed to enhance the public settings and to depict strength and resilience. In 1993 Watrous agreed to recreate one of the panels that while "acceptable" in 30s, was racially insensitive in the 90s.



James Watrous was a driving force behind the creation of the Elvehjem Museum on UW-Madison campus, where he received his BA, MA, and PhD. He was the recipient of the Wisconsin Visual Lifetime Achievement Award and is commemorated throughout Madison.

Paul Bunyan panels can be viewed on the first floor of the UW-Madison Memorial Union at 800 Langdon, Madison.

Public art at UW- Madison Memorial Union. Photo by J. Ferreira

AWA Membership Registration / Renewal

Help us promote visual art exhibits, educational workshops, appreciation, celebrations and recognition for our members and their communities. Invite your friends to become members and participate in youth and adult programs and celebrations.

Please register and pay online at

www.wiscartists.org or mail the enclosed registration form and your check
(made payable to **AWA**) to:

AWA Membership Chair Terrence Doeler
4919 Tonyawatha Trail, Monona, WI 53716
membership@wiscartists.org

See **registration form on page 17** or visit **wiscartists.org** for online registration.

Wausau Area Regional STAMP Exhibit 2022

by Bobby Walker, photo by Lynn Block

The exhibit was at the Center for Visual Arts in Wausau from June 15 - 23. Jurors from Wisconsin Valley Art Association (WVAA) selected twenty-two students from eight high schools -- Wausau East, Wausau West, Marathon, Edgar, Auburndale, Stratford, Rib Lake, and Phillips.

At the June 23 reception, CVA Executive Director Madison Hager and WVAA volunteers greeted seventy-five students, family, and friends. Natalie Vilter presented a watercolor demonstration and Juror Diana Osypowski selected State Awards. All participants received a certificate, sketchbook, and an individual artwork critique.



From left: Presenter Natalie Vilter and Judge Diana Osypowski demonstrated and critiqued.

Bridging Generations Argyle

by Elizabeth Johanna, photo by Library Director Sarah Kyrie



Argyle Community Library is creative in finding spaces to hold the events, as the space the library is very small. They are currently working on a building plan to enlarge their space. Nine participants came to the American Legion Community Park Shelter House for the Bridging Generations Art workshop. The first class had to be canceled because of a rainstorm, but the second class had lots of energy. The big decision for participants was which to choose for their project, Soda Can Cats or Pups.



Elizabeth Johanna

Children from five families enjoyed the class held in the park shelter.

From Monitor to Print

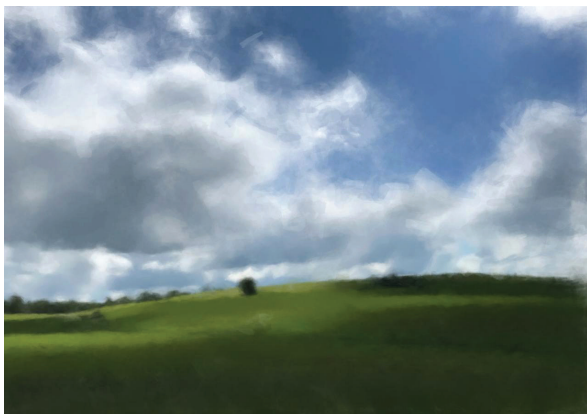
by Daina Zemliauskas

I am just beginning to learn and explore this digital world - constantly amazed at what I can achieve by exploiting a photograph to its next level. At first, it felt like "cheating", as it's relatively easy to achieve a painterly effect on a photograph. But by using my own photography, I realize that it is just another art form to explore. One can spend 20 minutes or 20 hours on a creation, depending on one's vision.



My original photo

I use Adobe's PaintCan - available only for iPad or iPhone, and iColorama - available on Android and Macs. Both apps are free downloads.



First revision using PaintCan app

First, I start to scroll through my camera roll and search for an appealing composition and color image. Next, I usually begin with PaintCan to manipulate large spaces. A fingertip can be dragged across the image to blend details, or for more control, I prefer using an Apple Pencil. This app does not have too many choices in terms of brushes and effects, but enough to form a base for the next step.

Then, I save my work to the camera roll, and open iColorama.

After watching hours of tutorials for this somewhat complex app, I felt comfortable with the basics to begin exploring the possibilities. For this image, and after "playing" with the different tones, brushes, and textures, I decided that this photo had been altered to the point at which it was ready for its final touches. I added a purple hue, a thick "paint", and applied quite a bit of texture.

If I am happy with the result, I have it printed at a local art printing service that utilizes archival inks on paper, canvas, or metal.

I invite you to try digital apps - many products are available with tutorials. You may find that this process stimulates your creativity and inspires you to delve into what was in the past, to me, an unchecked artful universe!



Finished piece using iColorama

Mixing Flesh Tones

by Mary Ann Inman



Just about any combination of red, yellow, and blue will produce a flesh tone. Each situation is different and no formula substitutes for your own observation. I will share what works for me.

For lighter skin, I use Aureolin or Yellow Ochre which is warmer and when mixed with Cobalt Blue does not turn green easily, Permanent Red or Rose, and a blue or violet. The blue depends on the subject, the lighting, and the pigments. Cerulean blue is probably the easiest to work with and works best for light-skinned subjects and children. For adults, I might use Cobalt Blue or Mineral Violet.

When working with fair complexions, I move toward a middle or cooler yellow such as Aureolin or even Lemon Yellow. For a young, fair-skinned model I might go with a Rose. I will choose a warmer red, such as Permanent Red for skin that has been exposed to the sun.

As complexions get darker, I move to darker yellows and earth tones, stepping down from Yellow Ochre to Raw Umber and finally to Burnt Umber. I will choose anything from bright red or orange hues in some circumstances.

The cool color, used mostly for shadows, is the most difficult to categorize because so much depends on the light source. For shadows I use the same yellow and red that I used in the light, and I add a cool color that neutralizes the yellow and red. The most important thing is to not use too much blue. You basically want a darker and more neutral version of what you have in the light. Use the same colors to paint hair and eyes.

First, practice making tertiary flesh-tone color charts. Write the names of colors used on your swatches.

Then, notice how reflective light color bounces off surrounding areas. If I use Mineral Violet for shadows, the subject might be wearing a purple shirt. Try to train yourself to pick up on subtle color nuances. Identify flesh tones that lean toward red, yellow, blue, or violet - especially reflective light.

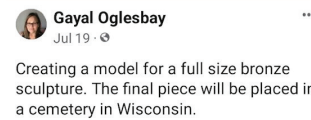
Lastly, take your own photos. Get your model outside in natural light. Just because the light and shadow patterns are there doesn't mean they are attractive. Too much sunlight bleaches out detail. Take many pictures and select the best. The light and shadow patterns will help you capture your model's personality.



Join us on Facebook

If you have a Facebook account, you can join the AWA Facebook group to see and post up to date information about upcoming WRAP workshops and other AWA activities. It's easy to join.

1. Log in to your Facebook account.
2. Use the Facebook search window in the upper left of your News Feed page to search for "AWA Association of Wisconsin Artists."
3. Click "Join Group" in the top-right corner. One of our group administrators will approve your request.



Bobby Walker Continues to Impact Wisconsin Visual Arts

by Jill Jensen



From left: Wausau STAMP entrant accepted her award from STAMP North Coordinator Bobby Walker and Regional Exhibit Judge Diana Osypowski.

This year's recipient of the John Steuart Curry Award is Bobby Walker. Bobby, a long time AWA board member, has been instrumental in bringing the AWA State Conference up to Wausau and in expanding the Statewide Teen Art Mentor Program (STAMP) into the northern region of the state.

Back in 1992, Bobby attended the annual UW School of Arts in Rhinelander. It was there she realized that she might have some artistic abilities. It was there, also, that one of her instructors was a delightful and inspirational teacher, Mary Ann Inman.

Once Bobby retired in 2004, she volunteered at the Center for Visual Arts (CVA) in Wausau. She was a gallery greeter, joined many committees and eventually became a CVA Board member.

In 2005 Bobby joined the Wisconsin Valley Art Association (WVAA) and became involved with WRAPs. In 2012, while attending a Lakeland Art League WRAP in Minocqua, she became re-acquainted with Mary Ann, who, at that time, was President of AWA. Bobby invited Mary Ann to visit the CVA before leaving the area. The visit to the CVA exhibit and facility sparked an idea. Would this be a great venue for a State Exhibit and Conference? The seed was planted.

Bobby's affiliation with CVA, WVAA, and AWA was instrumental in moving the event to Wausau. The first Wausau AWA State Conference was held in 2014. Her ability to facilitate AWA events has only grown since that time.

One of the programs routinely part of the AWA State Conference is STAMP. At first, most of those entries came from the southwestern and Madison areas of Wisconsin. Bobby worked with both WVAA and CVA to establish a Wausau area STAMP that began in 2014. This program continues to grow, along with the newly established STAMP sponsored by the Antigo Visual Artists. Lakeland Art League once had a STAMP program and has indicated an interest in reestablishing its program. This year more than half of the STAMP exhibits are in the northern part of the state.

Since 2017 Bobby has been AWA's Northern STAMP Coordinator. Her long-term and ongoing contributions to AWA's efforts to bring artistic opportunities to all ages in all parts of the state underscore how deserving she is to be this year's winner of the John Steuart Curry Award.

Congratulations Bobby!

Statewide Teen Art Mentor Program, STAMP

by Jeanne Ferreira, photo by Peter Vance

Platteville was the first STAMP in November. The Harry and Laura Nohr Gallery hosted the show. While smaller than in years past, it was a good representation of the talent of our young artists. Our thanks to outgoing coordinator Tom Cabezas for his years of work with STAMP.



Metamorphosis
Acrylic
Madison Gruny, Medford

Antigo brought us a new STAMP in March. Antigo Visual Arts held their first exhibit, coordinated by Danna Gabriel. It was a smashing success, judged by Lisa Krueger. It represented ten high schools and art venues in far northern Wisconsin. We look forward to a continued Antigo STAMP program.

Beloit showed art from four regional high schools in April. These shows were strong. Beloit Art Center was filled to the brim with artwork - every gallery wall was covered with the works of the teens from the area. The reception attracted a boatload of family and friends to enjoy the evening. Thank you, Jerry Sveum, Dawn Stadelman, and crew for such a fabulous exhibit.

Richland Area High School Art Exhibit was also presented in April. UW-Richland/Platteville was the venue for the Richland Area High School Art Exhibit and rain did not keep attendees away from the awards reception. We appreciate all the work that Coordinator Jan von Stein has done over the years to make STAMP happen.



The Quiet Place
Oil
Aliyah Stroik, Rhinelander



Breaking Point
Pencil
Ellie Maxwell, Beloit



Banana Fish
Glass
Monica Manuel-Robles, Platteville

ON THE ROAD

with Tamara Tsurkan

By Teresa Vicars

Tamara's art journey started in Chernivtsi, Ukraine, drawing as a child. She attended art school 3 hours a day, studying art history, sculpture and all media. In college she studied math, computer science and art. In 1995 Tamara taught high school math in Ukraine. After getting married and coming to the United States in 2001, Tamara worked in computers and took art classes at MATC.

Tamara is a multi-talented artist, painting in acrylic, oil, and watercolor. She has explored mixed media and photography as well. Now she is working primarily with fiber using a needle-felting technique, and also creating jewelry. She does custom-felted pet portraits which are quite popular, even selling one to a celebrity and becoming a social media success.



Corals and oxidised sterling silver

Tamara is a current member of AWA and has received several State Exhibit Awards. AWA has been lucky to have Tamara as our Editor since 2017. She works tirelessly putting together the AWA Color Catalog, Contour Notes publications, and maintains our website.

I'll leave you with some words of wisdom from Tamara:

"Art is a happy place where you can escape reality."

To see more of Tamara's work: Instagram: @needlefeltingandmore

Website: <https://www.art-by-tamara.com>

Charities that she donates to help Ukraine:

<https://www.wisconsinukranians.org> and <https://www.razomforukraine.org>



Tamara Tsurkan at the Art Fair.
Photo by Teresa Vicars

Over the last 15 years she has been actively participating in art shows and fairs throughout the Midwest, including Art Fair on the Square and Art Fair off the Square in Madison, Spring Green Art Fair, East Side Millennium Park and Gold Coast Art Fairs in Chicago, Edina Art Fair and Stone Arch Art Festival in Minneapolis, and Ann Arbor Art Fair in Michigan.

This spring on April 30, Tamara did a fundraiser for Ukraine by selling her work and donated all \$3,800 to the City of Goodness (Housing & Homeless Shelter). Bravo!



Needle felting

WRAP Summaries

via coordinators by Mary Ann Inman

Waunakee article and photo by Kylie West

Our exhibit was from May 1 to 14 at Waunakee Public Library. The show featured 20 artists and 37 pieces. Our program included an awards critique from Angela Johnson and an aluminum-casting workshop lead by owner Alisa Toninato from FeLion Studios. Participants learned about the metal-casting industry and process. This was followed by the opportunity to carve a sand-mold and have it poured with molten aluminum by the FeLion team. Participants, including 20 non-exhibitors, made unique creations, and experienced an unusual new form of art.



Photo caption: *Here Alisa and her team are melting and preparing the aluminum for pouring.*

Wautoma by Pat Spear, photo by Rachel Pavlic



Twenty artists exhibited 60 artworks at the Wautoma pop-up exhibit and workshop on June 4 at the Senior Center. The participants enjoyed Roberta Condon's pastel demonstration. Artists appreciated the personal attention she gave them as they worked with pastels. Members of the Rural Rembrandt Art Club provided a potluck lunch buffet. After lunch, Roberta gave critiques to the winning artworks, as well as others. Several of the artists remarked that her critiques were the most comprehensive they'd ever had.

Photo caption: *Judge and presenter Roberta Condon talked about pastels. These are two of her paintings.*

Cambridge by Jill Stevens Jensen

The Cambridge pop-up WRAP took place at the beautiful Cambridge Winery on April 30. We had 34 exhibiting artists, plus 4 additional workshop participants. Roberta Condon was our judge and workshop host. She conducted a hands-on, "Playing with Pastels" workshop where we created our own pastel art on sanded paper, using flowers on the table as a subject. We learned some of Roberta's techniques that she uses to create her unique pastel art. We enjoyed food and wine from the winery and plenty of lively conversation.



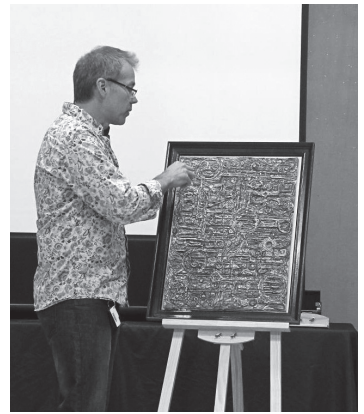
Photo caption: *Roberta Condon concluded the workshop with a relaxed and informative critique session.*

Waukesha/Oconomowoc

by Jenna Plyer, photo by Nancy Peterson

The Waukesha/Oconomowoc WRAP workshop was held on May 21 at the Oconomowoc Arts Center with 28 participating artists exhibiting 73 artworks. Associate Professor of Art and Design, Michael Julian, from UW-Waukesha started our workshop with a presentation on his current work. His presentation included t-shirt designs, paintings, and student practice projects. The workshop concluded with a critique session. Artists enjoyed the one-on-one time they got when Michael critiqued one artwork per participating artist.

Photo caption: Judge Michael Julian critiquing artist Laura Strehlow's *String Theory*.



Rhineland article and photos by Melinda Childs



After a year of virtual exhibits, Nicolet College was excited to open featuring the Rhineland WRAP artists. With a focused effort on student outreach the show featured 15 registered artists — 11 of them first time WRAP participants. Judges Jeanne Debbink and Tony Drefful teamed up and gave a presentation about woodcut engravings and the history of printmaking. It was a hands-on workshop about collage techniques. The art created was viewed and the group toured the gallery. Artists spoke about their work. Judges critiqued with tips about presentation, styles, and various mediums.

Photo caption: The workshop featured a hands-on collage session.

Antigo - NEW in 2022! by coordinator by Rosemary Bauknecht

Our first WRAP was hosted and sponsored by Antigo Visual Arts (AVA) and featured 16 artists and 44 splendid pieces of art. The workshop was held on May 7, at Langlade County Historical Museum — our former Carnegie Library. Judge and workshop speaker was Lisa Krueger. Our workshop began with a critique of exhibit art which was followed by a light luncheon. Then, Lisa Krueger spoke about her creative process and where she found her inspiration. Lisa also demonstrated her mixed media techniques and processes.

Photo caption: Judge and presenter Lisa Krueger led a critique session.



Monroe by Brenda Blum

The Monroe Arts Center was pleased to exhibit the works of ten artists March 18 to May 20 in the Frehner Gallery. Several mediums were represented, including graphite drawings, quilting, ceramics, and paintings with watercolor, oil, and acrylic mediums. On May 21, Portrait Artist Jan Richardson from Madison discussed the paths artists take on their different roads to creativity. Following her talk, she offered suggestions to strengthen artworks and encouraged artists to continue their own unique artistic journeys.

WRAP Workshops

State Award recipients in these Fall WRAPs will be eligible to exhibit at the Pyle Center in Madison, August-September, 2023

PLATTEVILLE

Entry and payment due: Saturday, September 10, 2022 (3 piece limit)
Pay online or make check payable to Rountree Gallery
Artwork Due: Friday, Sept. 9, 4-7 PM, Saturday, Sept. 10, 10AM-2PM
Workshop: Saturday, September 17, 2022, 11AM-3PM
Location: Rountree Gallery, 120 West Main St., Platteville, WI 53818
Coordinator: Bill Mitchell, 773-415-8215, 120 West Main St., Platteville, WI 53818, rountreegallery@gmail.com, rountreegallery.org

FOND DU LAC

Entry & payment due: August 12, 2022 (2 piece limit)
Pay online or make check payable to Fond du Lac Artists Association
Artwork due: Mon-Wed, August 29-31, 2022, 10 am - 5 pm
Workshop: Saturday, October 1, 2022, Workshop 10 am to 12 noon, Critique 1:30 to 3 pm.
Location: Exhibit and Critique, Gallery & Frame 94 S. Main St, Fond du Lac, WI 54935
Workshop, Thelma Sadoff Center for the Arts, 51 Sheboygan St., Fond du Lac, WI 54935
Coordinator: Fran Schmid, 1220 Winchester Ave., Fond du Lac WI 54935, fdlartistsshow@gmail.com, 920-322-0495



AWA MEMBERS SHOW

AWA membership required, no entry fee, online entry only
Online entry due: September 15, 2022 (2 piece limit)
Artwork due: Saturday, September 24, 2022, 10 AM - 12 NOON
Artwork pick up: Saturday, October 29, 2022, 9-11 AM
Location: Pyle Center, 702 Langdon St., Madison, WI 53706.
Coordinators: Mary Ann Inman, outreach@wiscartists.org, 608-676-4853
Becky Herb, wrap@wiscartists.org

WAUSAU

Entry and payment due: Monday, August 22, 2022
Pay on-line or make check payable to WI Valley Art Association
Artwork due: Saturday, August 27, 9-11 AM, in CVA Classroom
Reception: TBA
Workshop: Sunday, October 16, 2022, noon-3 PM
Location: Center for the Visual Arts, 427 N. 4th St., Wausau, WI 54403
Coordinator: Lynn Block, 222033 Greentree Rd., Marathon, WI 54448, 715-443-2151, L2block@frontier.com
Note: CVA charges 40% commission on sales.

MADISON-EAST

Entry and payment due: Saturday, October 1, 2022
Pay on-line or make check payable to Association of Wisconsin Artists (AWA)
Artwork due: Saturday, October 15, 2022, 9:30-10:00 AM (bring easels, 2 piece limit). Also email photos to wrap@wiscartists.org by Oct. 1.
Workshop: Saturday, October 15, 2022, 10 AM - 2 PM
Location: Oakwood Village Prairie Ridge, 5565 Tancho Dr., Madison, WI 54718
Coordinator: Rebecca Herb, 5806 Anchorage Ave., Madison, WI 53705, 608-467-8594, wrap@wiscartists.org

CHIPPEWA FALLS

Entry and payment due: Thursday, September 15, 2022.

Pay online or make check payable to Valley Art Association and mail to VAA, P.O. Box 674, Chippewa Falls, WI 54729

Artwork due: Mon., Oct. 10, 10 am-4 pm or Tues., Oct. 11, 10 am - 2 pm, (2 piece limit, no larger than 3 feet x 3 feet.)

Artist Reception: Saturday, Nov. 5, 2022, noon-4 pm.

Workshop: Thursday, November 3, 2022, 3:00-5:30 pm

Artwork pick up: Monday-Tuesday, Nov. 21-22, 2022.

Location: Heyde Center for the Arts, 3 South High Street, Chippewa Falls, WI 54729

Coordinator: Val West Naber, valvaa2021@gmail.com, 715-658-1968, <http://www.valleyartassociation.org>

Note: The Heyde Center charges a 30% commission on sales.

BELOIT

Entry and payment due: October 27, 2022 (2 piece limit)

Pay online or make check payable to Beloit Art Center.

Artwork due: Fri., Oct. 28, 2022, 10 AM-5 PM, Sat., Oct. 29, 2022, 10AM-2PM

Opening reception: Friday, Nov 4, 2022, 5 - 7 PM

Workshop: Saturday, Nov 26, 2022, 9 AM - 1 PM

Location: Beloit Art Center, 520 E Grand Ave., Beloit, WI 53511

Coordinators: Dawn Stadelman, info@beloitartcenter.com, 608-289-0696

Jerry Sveum, sveums@charter.net, 608-751-5458, 2234 Pow Wow Trail, Beloit, WI 53511

MADISON

Entry and payment due: Tuesday, January 31, 2023 (2 piece limit)

Enter and pay online or mail paper form and check payable to AWA (Association of Wisconsin Artists) to Charles Stinger, 1025 Seminole Hwy, Madison, WI 53711-3020

Artwork due: Sat., Feb. 25, 2023, 8:30-11:30 am, Room 112, Pyle Center

Workshop: Saturday, April 1, 2023, 9 am - 2 pm.

Location: Pyle Center, 702 Langdon St., Madison, WI 53706.

Coordinators: Wendy Crone, wendresearch@gmail.com, Shevanthi Hettiarachchi, niro4visual@hotmail.com, Charles Stinger, 608-298-7924, stinger@buffalo.edu, Patricia Stinger, pmfreres@gmail.com, Tania Thousand, taniathousand@gmail.com

ANTIGO

Entry and payment due: Friday, February 24, 2023. (3 piece limit)

Pay on-line or make check payable to Antigo Visual Arts and mail to Antigo Visual Arts, P.O. Box 312, Antigo, WI 54409

Artwork due: Friday, March 3, 4-6 pm, Saturday, March 4, 10 am - 12 pm, 2023

Reception: Friday, March 10, 2023, 5-7PM

Workshop: Saturday, May 6, 2023, times TBA

Location: AVA Art Gallery, Langlade County Historical Museum, 404 Superior St., Antigo, WI 54409

Coordinator: Rosemary Bauknecht, 715-623-4000, rbauknecht@yahoo.com

GET OUTSIDE AND PAINT SUMMER!

PORTABLE EASELS, CARRYING
CASES FOR PAINTS, CANVASSES,
PADS, BRUSHES, PASTELS, PENS,
PENCILS, PALETTES AND MORE

LYNN'S

QUALITY ART SUPPLIES & FRAMING
AT COMPETITIVE PRICES

m-r 10-7, f 10-6, sat 10-5
5928 odana road, madison 608-274-1442
At least 10% off supplies & framing
for AWA members

*** CLOSE OUT ITEMS 50% OFF***

WRAP News

by *Becky Herb*



The 2021-2022 Exhibit year of the Wisconsin Regional Art Program has finished, and the AWA-WRAP State Exhibit at the Center for the Visual Art in Wausau is available for viewing through State Conference Weekend, August 26-27, 2022. I hope you'll be able to join us in Wausau to celebrate the wonderful artwork created by WRAP artists from around Wisconsin. Many thanks to all the regional coordinators and volunteers who make this program possible.

The 2022-2023 Exhibit year will run from July 1, 2022 - June 30, 2023, beginning with the eight Fall 2022 and early Spring 2023 WRAPs listed in this issue of Contour Notes. We are especially delighted to welcome the new Chippewa Falls WRAP. The State Exhibit and Conference will be back in Madison at the Pyle Center in August-September, 2023, with the conference on Sept. 22-23, 2023.

Becky Herb,
wrap@wiscartists.org

QUOTES

from Wisconsin Arts Board

"Anyone who tries to make a distinction between education and entertainment doesn't know the first thing about either." – Marshall McLuhan

"No matter what people tell you, words and ideas can change the world" – Robin Williams

"There is nothing noble in being superior to your fellow men. True nobility lies in being superior to your former self." – Ernest Hemingway

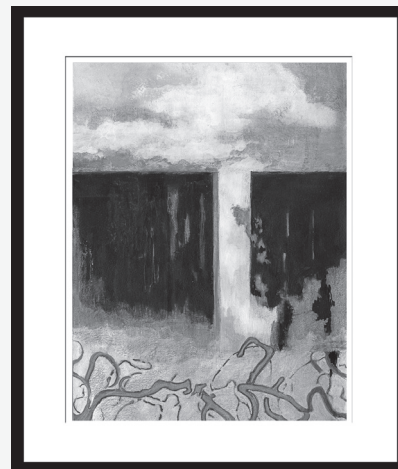
"That is my problem with life, I rush through it, like I'm being chased. Even things whose whole point is slowness, like drinking relaxing tea. When I drink relaxing tea, I suck it down as if I'm in a contest for who can drink relaxing tea the quickest." – Miranda July

"A study in the Washington Post says that women have better verbal skills than men. I just want to say to the authors of that study: "Duh." – Conan O'Brien

How to Present Your 2D Artwork

by Mary Ann Inman

Choosing the right frame can enhance a piece of art, while the wrong one might become a distraction. Apart from a frame's aesthetics, there are many other factors that need to be considered when choosing your frame, besides the conservation factors that may affect your artwork long-term. While personal taste, subjectivity, and price do play a role in the framing choices that you make, here are a few things to think about.



Not in My Backyard

Materials, colors, styles, and prices

Since frames and matboards are available in thousands of colors and styles, the choices seem endless. However, one should remember that the artwork and its frame are always viewed together and can complement each other. Some frames and mats can overpower your artwork. Frames and mats that are too heavy, bright, or dark could be overpowering. Most gallery curators do not recommend dark green, black, or navy mats.

While it is important to select framing materials that are less dominant than your artwork, frames and mats that are too similar in color to the artwork or as busy in terms of your style should be avoided. A moderate amount of contrast or an ornate frame or mat could work well with a lighter or subtle-styled painting and enhance it.

Now, what about keeping the cost of presentation lower? Here are ways to present your work professionally without breaking the bank. Many artists on a limited budget use gallery wrapped canvases. These can be used for many mediums, including watercolor - sprayed with a finishing varnish. Canvases may be presented unframed if all four sides are neatly covered. If you still prefer framed art, don't cut corners by buying frames that are not appropriate, damaged, or falling apart. Instead, learn how to make artwork that will fit more reasonably priced standard size frames and mats. Common sizes are 11 by 14, 16 by 20, etc. Frame shops and online retail sources often publish a table listing standard sizes.



In closing, your artwork takes time to create. Please take the time to shop around and spend a few bucks to present it well. And don't forget to mount D-rings and a wire hanger on the back side.



AWA Membership Registration / Renewal Form

Please fill in this registration and send it along with a check (made payable to AWA) to:

Terrence Doeler - AWA Membership Chair, 4919 Tonyawatha Trail, Monona, WI 53716

New Member Renewal Years at \$20 year

Name _____

Primary Address _____

City _____ State _____ Zip _____

County _____ Phone (_____) _____

e-mail _____

If you have a seasonal address, include the above information for it, along with the dates on a slip of paper. The Post Office does NOT forward Contour Notes.

WRAP ENTRY FORM



Send to Coordinator _____

Please use online form at wiscartists.org if possible!

Name _____ Phone (____) _____ Email _____

Address _____ City _____ State _____ Zip _____

Regional WRAP you are entering: _____ First time attending a WRAP? ___Yes ___No

	Artwork 1	Artwork 2	Artwork 3
Title			
Media			
Size *			
Price (or Not for Sale)			

*Size is height x width x depth to the nearest inch without frame

\$30.00 fee enclosed (Make check payable to the SPONSOR of the workshop). Rules of Entry: I have read the guidelines and certify that all my submitted work is ORIGINAL AND COMPLETED WITHIN THE PAST TWO YEARS. I am a NON-PROFESSIONAL ARTIST, 18 or older. I agree to provide the work(s) of art or other material identified above for display in the WRAP Exhibit. I agree to hold harmless AWA from any and all copyright violations and I release AWA, workshop sponsor(s) and coordinator(s) and the exhibit venue from responsibility for loss, damage, destruction or theft of work(s) while on display and/or while being shipped to or from the exhibit. The displayed works are not and will not be covered under any insurance or liability coverage applicable to the AWA, coordinator(s), sponsor(s) or venue. I understand that if I want insurance coverage, I am responsible for obtaining such coverage at my own cost for the work(s) being displayed.

Image Use Agreement

AWA and the exhibitor have permission to photograph & create digital images of me while attending the exhibit to use, copy, publish, distribute & otherwise reproduce for AWA purposes including but not limited to websites, publications & social media. ___ I accept ___ I do not accept.

Signature _____ Date _____

Identification Labels: Cut out or make facsimiles, and attach to back of artwork.

Name _____	Name _____	Name _____
Address _____	Address _____	Address _____
City and Zip _____	City and Zip _____	City and Zip _____
Title _____	Title _____	Title _____



The History of WRAP

by Mary Ann Inman



AWA, formerly Wisconsin Regional Art Program (WRAA), has changed its name twice as it has evolved. For historical purposes, it will be referred to as the association. The association was founded mainly as a support group for the Rural Art Program (RAP), begun in 1940 by UW-Madison's Dean Chris Christensen and Prof. John Barton. These visionary men believed the lives of rural families could and should be enriched with art. They recruited John Steuart Curry to UW to be an artist-in-residence who would spend time traveling about, encouraging citizen artists and crafts people. By 1945 the RAP had held its first exhibit in Madison of works by non-professional artists from around the state. The program became so popular that Prof. James Schwalbach was hired to coach rural artists and set up exhibits. He and Curry's successor, Aaron Bohrod, attended a dozen shows per year, teaching and judging. The plan for a regional artists' association was first proposed by a handful of artists who were excited by the early RAP and wanted to help UW Extension reach out to even more Wisconsin artists, stating this goal explicitly in their by-laws.

Incorporated in 1954 and continually managed by a volunteer board, the association began producing the newsletter *Contour Notes* which linked the UW's Art Program to artists and to the new art clubs then springing up across the state. The association thrived, *Contour Notes* moved to tighter focus on WRAP and association events and began collecting and distributing merit/service awards, currently totaling \$5,500. Membership has fluctuated, but for the past 15 years has remained in the 400-500 range. In 2000, in anticipation of future state budget cuts, the association began building an endowment to help the UW Madison's WRAP. Since 2015, the endowment--worth about \$180,000--has paid \$6,000-\$8300 annually to support WRAP. WRAP currently averages 22 shows/year with numbers depending on access to exhibit sites and coordinators.

In 2004, our nonprofit received its first grant from the Wisconsin Arts Board. The funding provided new opportunities for the association to establish its own identity. The association began new programs, publications, celebrations, and fundraisers: Bridging Generations children's art instruction and exhibit program (2004); Evening with the Arts annual reception for members (2008); Statewide Teen Art Mentor Program (STAMP), providing subsidies for teen regional exhibits (2009); Tiny Treasures miniatures artwork competition (2010); Timely Treasures program calendar (2011); and an annual State Exhibit color catalog (2012).

Recently, under new leadership, the association has been renamed to eliminate long-standing confusion with WRAP's name, and to establish an identity separate from WRAP. AWA designed a new logo, and enhanced customer/member interactions by switching to a website that facilitated online registrations, membership renewal, payments and similar transactions. On October 31, 2020 DCS discontinued support for the WRAP programs. AWA is positioned advantageously to keep the 80-year-old program alive and well.



ASSOCIATION OF WISCONSIN ARTISTS

Terrence Doeler, AWA Membership Chair
4919 Tonyawatha Trail,
Monona, WI 53716-2503

Non-profit
Organization
U.S. Postage
PAID
PLATTEVILLE, WI
53818
Permit No. 124

RETURN SERVICE REQUESTED

WRAP

Wisconsin Regional Art Program



Shapes in Flight, Christine Steinmiller



Patient Foxes, Katherine Weber

Check out Online Exhibits

wiscartists.org go to WRAP Online Exhibits



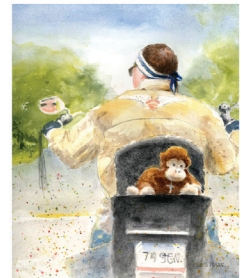
Sharon Stauffer, M'Lady



Susan Porubcan, Remnants of Fall



Barbara Nehring, Peace in the Upper Peninsula



Eyes on You, Caitilin Stolle